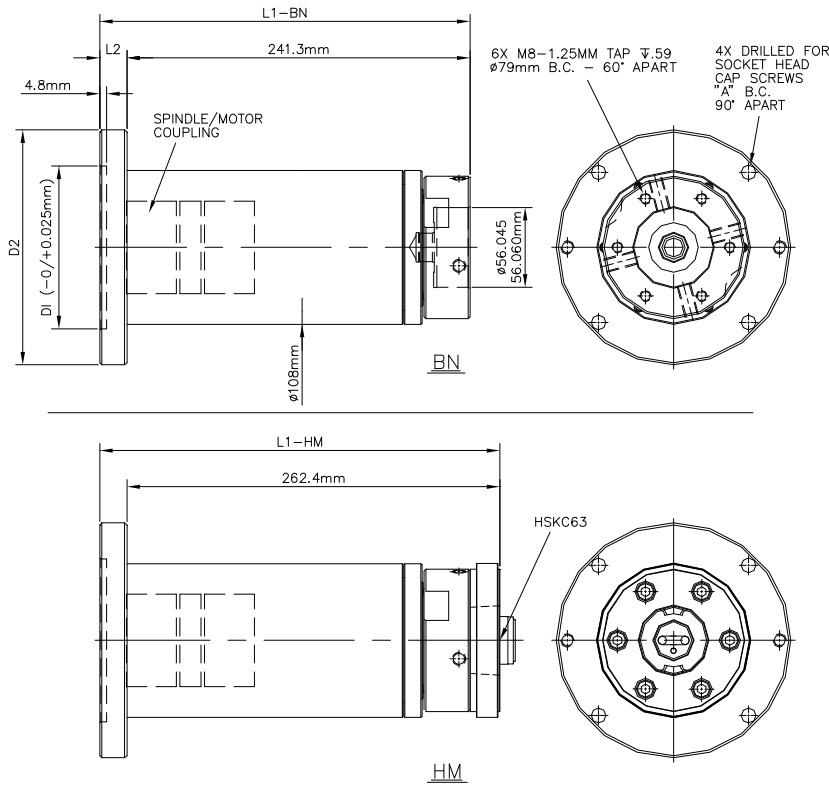
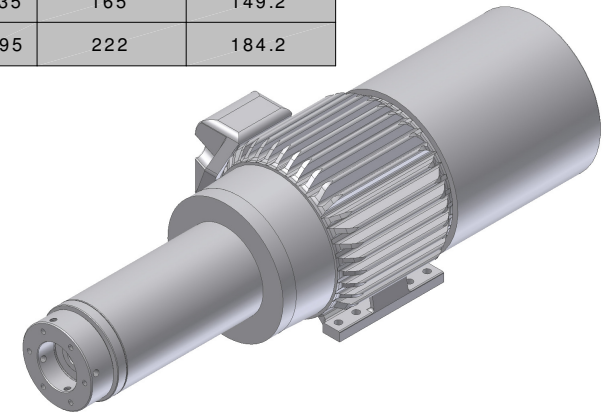


Gilman/SKF Mech-Tronix-Lite Spindles



Motor Size	L1-BN	L1-HM	L2
Tolerance	mm	mm	mm
56C	260.4	281.4	19
143TC/145TC	260.4	281.4	19
182TC/184TC	277.9	299	36.6

Motor Size	D1	D2	A
Tolerance	mm	mm	mm
56C	114.35	165	149.2
143TC/145TC	114.35	165	149.2
182TC/184TC	215.95	222	184.2



Features:

- For use with NEMA frame motors.
- Special order for use with IEC (metric) frame motors.
- Maximum operating speed is 6,000 rpm.

For more information or to request a dimensional drawing contact us at 800-445-6267 or WWW.SKFP.T.COM

Motor Types:

- Standard induction, single running speed.
- Inverter duty, open loop, variable speed.
- Inverter duty, closed loop, variable speed with limited slip.